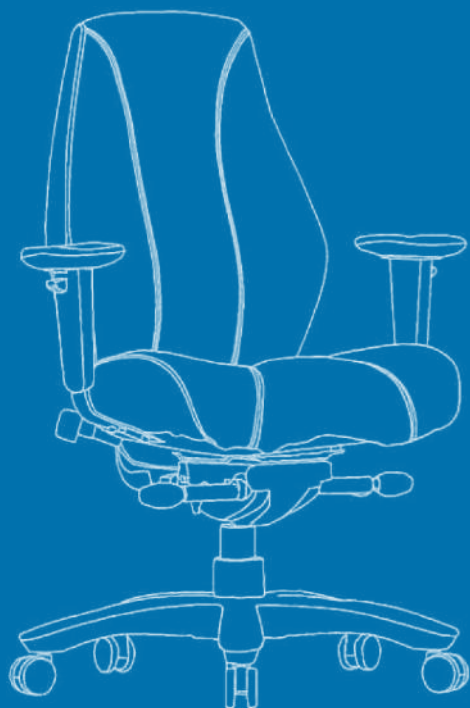
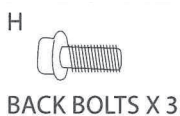
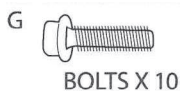
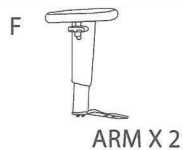
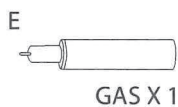
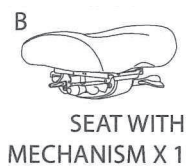
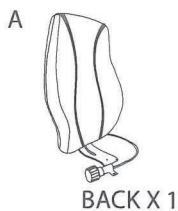
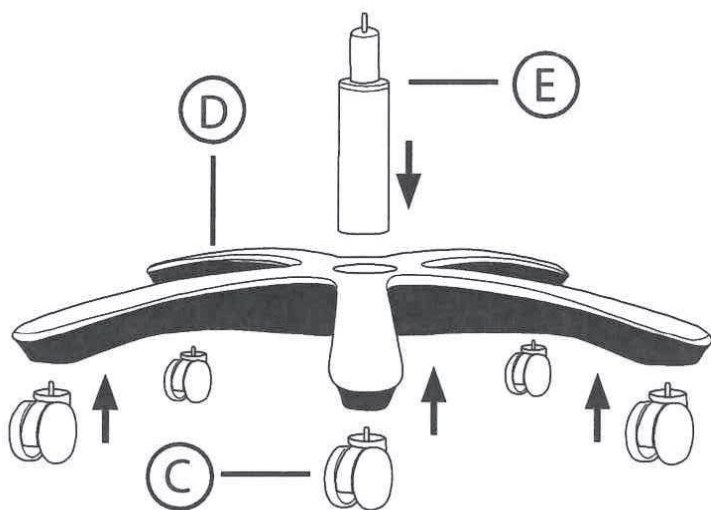


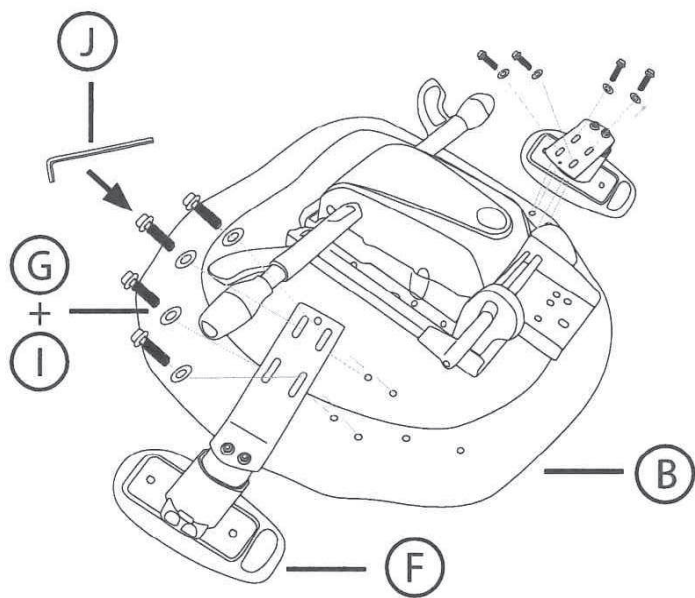
Assembly instructions
Notice de montage
Montage instructies
Montageanleitung
Istruzioni di montaggio
Instrucciones de montaje
Инструкция по сборке
Instrukcje montażu



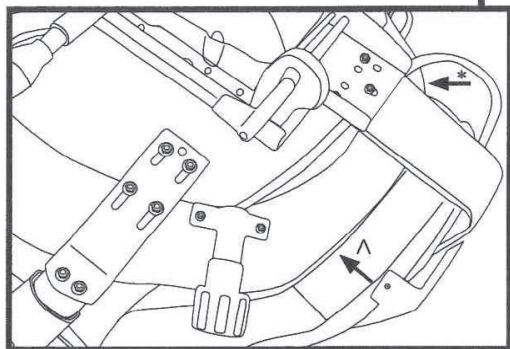
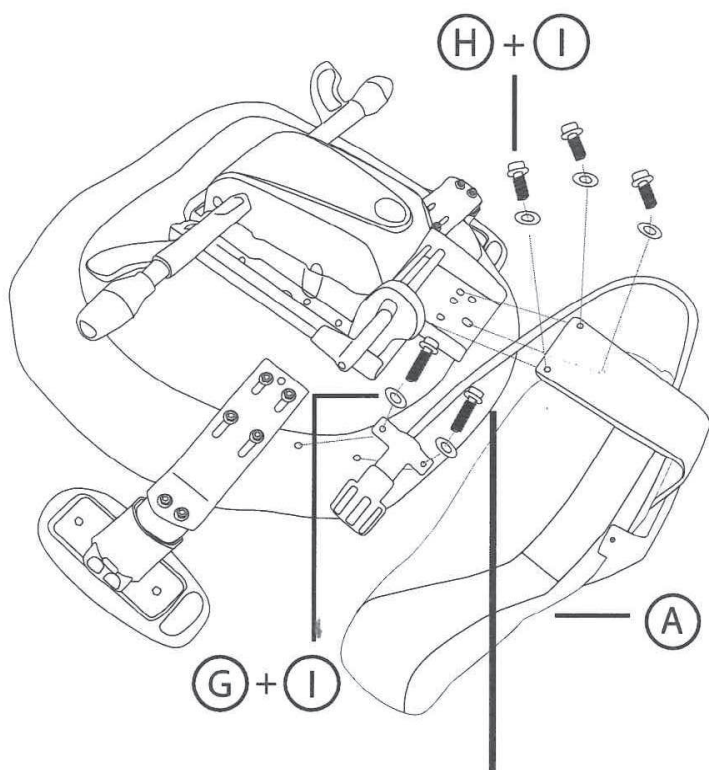
PARTS AND TOOLS LIST





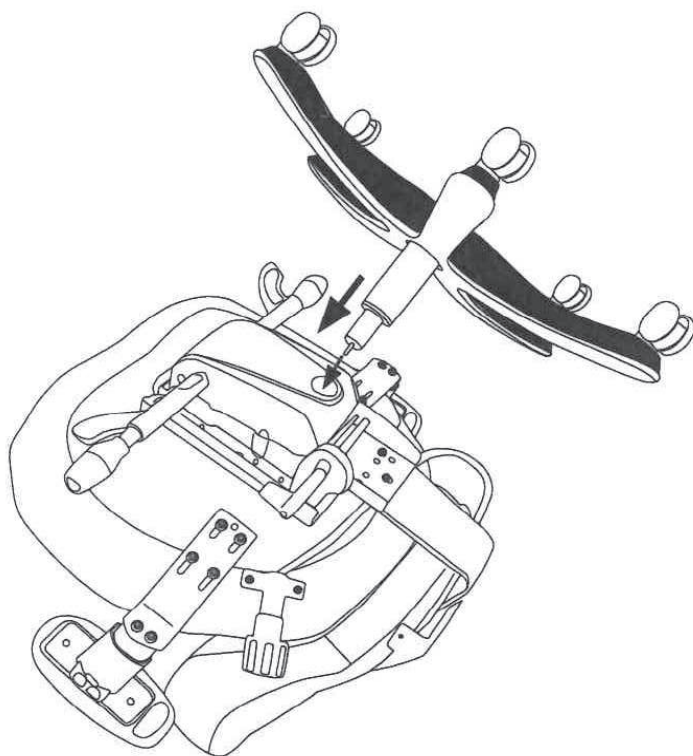


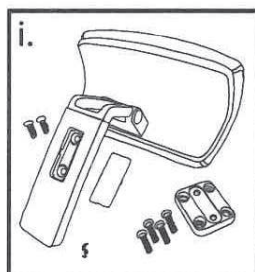
STEP 3



*The cable of the lumbar goes under the bar of mechanism and back

^ There should be no gaps between the back and seat, make sure both side are even.





***INSTALL HEADREST**
AFTER STEP 4
(if applicable)

**The hole on the back may need to be pitched before installation*

